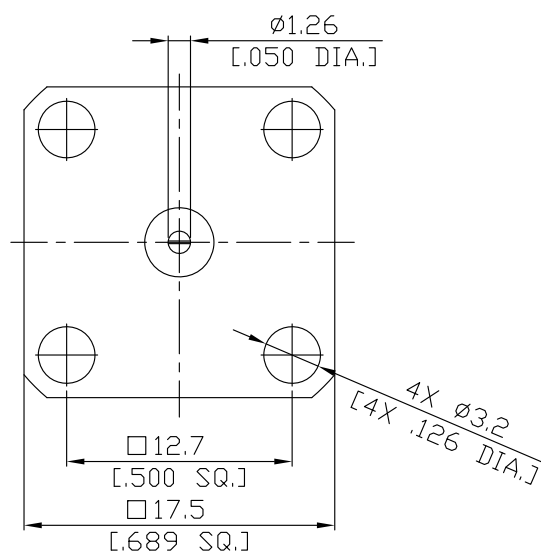
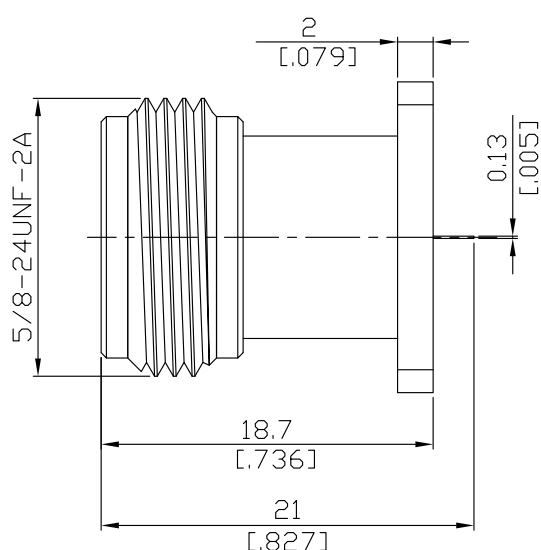


N Jack (Female) Connector Solder Attachment 4 Hole Flange Mount
Flat Terminal, 12.7mm (.500 inch) Hole Spacing DC-11GHz VSWR1.20

N2GFD50-2100D / H4



All dimensions are in mm [inch]

Tolerances according to DIN ISO 2768-mH

Interface

According to

IEC 61169-16; MIL-STD-348B/304

Electrical Data

Impedance

50 Ω

Frequency

DC to 11 GHz

VSWR (Return Loss)

≤ 1.20 (≥ 20.83 dB)

Insertion Loss

≤ 0.1 x √F (GHz) dB

Insulation Resistance

≥ 5 GΩ

Center Contact Resistance

≤ 1 mΩ

Outer Contact Resistance

≤ 0.25 mΩ

Working Voltage (at sea level)

500 V rms

Power handling

1 GHz: 1000 W; 2 GHz: 700 W; 8 GHz: 300 W

Material And Plating

Piece Parts	Material	Plating
Centre contact	Phosphor Bronze	Gold plating, 3 μinch (Non-magnetic nickel-phosphorus underplating, 80 μinch)
Body	Brass	Copper-Tin-Zinc Alloy
Insulator	PTFE	

N Jack (Female) Connector Solder Attachment 4 Hole Flange Mount
Flat Terminal, 12.7mm (.500 inch) Hole Spacing DC-11GHz VSWR1.20

N2GFD50-2100D / H4

Mechanical Data

Coupling mechanisms	Screw-lock
Mating Cycles	≥ 500
Centre Contact	Soldered
Terminal Type	Flat
Captivated Type	Mechanical
Coupling Test Torque	1.7 Nm max.
Recommended Torque	0.7 Nm to 1.1 Nm

Environmental Data

Temperature Range	-55°C to +155°C
Thermal shock	MIL-STD-202, Meth. 107, Cond. B
Corrosion	MIL-STD-202, Meth. 101, Cond. B
Vibration	MIL-STD-202, Meth. 204, Cond.D
Shock	MIL-STD-202, Meth. 213, Cond. I
Moisture Resistance	MIL-STD-202, Meth. 106
RoHS	compliant

Packing

Single or 100